

Certificate of Analysis

Product Name: DBCO- NHS Ester
Catalog Number: A133
Lot Number: 1503
Chemical Composition: C₂₃H₁₈N₂O₅
Molecular Weight: 402.40
Appearance: Slightly yellow solid
Storage: Upon receipt store at -20°C

	Lot Data	Specification
Purity		
HPLC, 254 nm	>95%	95%
TLC (EtOAc:MeOH)	Single spot	Single spot
H NMR	Conforms	In accordance with structure



22-April-2015

Andrei Polukhtin, Quality Assurance Manager

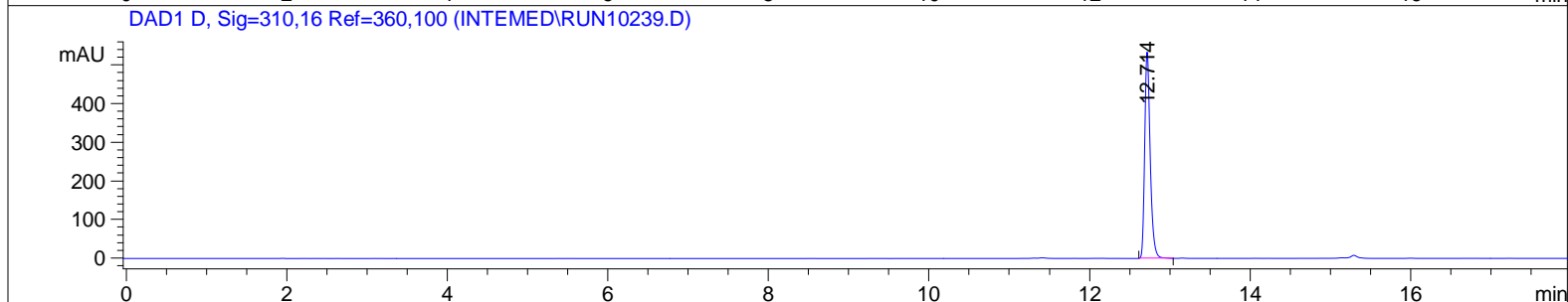
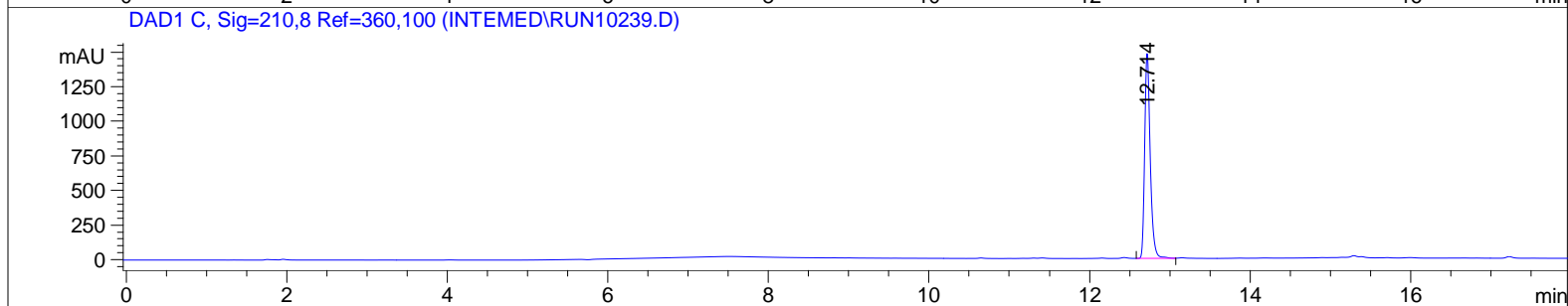
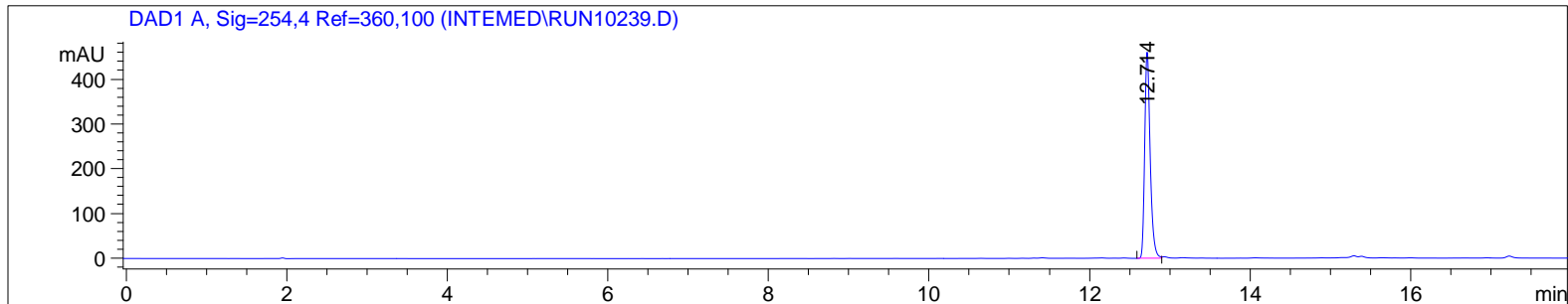
Click Chemistry Tools certifies on the date above that this is an accurate record of the analysis of the above mentioned lot and that this lot met all product specifications at the time of analysis.

DBCO-NHS ester

```

=====
Injection Date   : 4/21/2015 2:30:36 PM
Sample Name     : DBCO-NHS ester           Location  : Vial 41
Acq. Operator   : Andrei
Acq. Instrument : Instrument 1             Inj Volume: 3 µl
Acq. Method     : C:\HPCHEM\1\METHODS\METHOD_1.M
Last changed    : 2/20/2015 3:42:13 PM by PW
Analysis Method : C:\HPCHEM\1\METHODS\METHOD_1.M
Last changed    : 4/20/2015 10:08:28 AM by Andrei
                  (modified after loading)
Gradient over from 10% ACN 10 min to 85% B
Water

```



```

=====
                          Area Percent Report
=====

```

```

Sorted By      :      Signal
Multiplier     :      1.0000
Dilution      :      1.0000
Use Multiplier & Dilution Factor with ISTDs

```

Signal 1: DAD1 A, Sig=254,4 Ref=360,100

Peak #	RetTime [min]	Type	Width [min]	Area [mAU*s]	Height [mAU]	Area %
1	12.714	VV	0.0711	2188.05420	463.62253	100.0000

```
Totals :                2188.05420  463.62253
```

Results obtained with enhanced integrator!

Signal 2: DAD1 C, Sig=210,8 Ref=360,100

Peak #	RetTime [min]	Type	Width [min]	Area [mAU*s]	Height [mAU]	Area %
1	12.714	VV	0.0719	7133.57861	1487.66760	100.0000

Totals : 7133.57861 1487.66760

Results obtained with enhanced integrator!

Signal 3: DAD1 D, Sig=310,16 Ref=360,100

Peak #	RetTime [min]	Type	Width [min]	Area [mAU*s]	Height [mAU]	Area %
1	12.714	BB	0.0713	2544.28003	537.12646	100.0000

Totals : 2544.28003 537.12646

Results obtained with enhanced integrator!

=====
*** End of Report ***