



Click Chemistry Tools
Bioconjugate Technology Company



Enrichment Media and Kits

**Innovative Biotin/Streptavidin-free Tools for
Capturing Azide- or Alkyne-tagged Proteins**

Protein Enrichment Kits

Overview

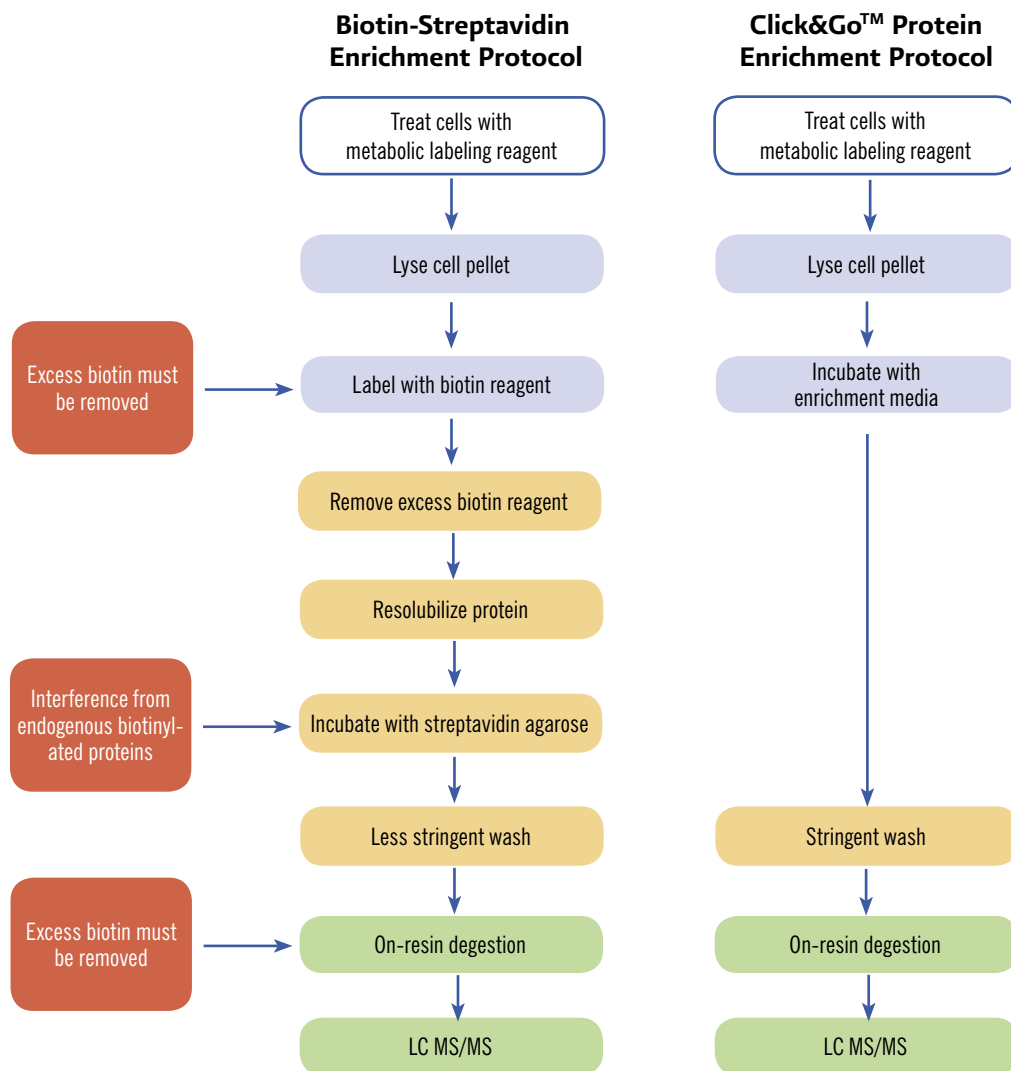
Click & Go™ Protein Enrichment Kits is an efficient, biotin/streptavidin-free tool for capturing azide- or alkyne-tagged biomolecules onto an agarose resin via click reaction. Superior to biotin or lectin based enrichment approaches. Ideal for covalent capture of specific sub-classes of proteins which have been metabolically, enzymatically, or chemically azido- or alkyne-tagged. The resin containing the covalently attached proteins can be washed with high stringency, virtually eliminating any non-specifically bound proteins. Upon protease digestion, it yields a highly specific peptide pool that is ideal for mass spectroscopy (e.g., LC MS/MS) based analysis.

Highlights

- Far superior digest purity compared to biotin-SA digest
- Affinity resin is adaptable to column and batch affinity chromatography techniques
- Available as stand-alone reagent, or kit format
- Substantially reduced pull-out cost compare to conventional biotin-SA protocol

Figure 1.

Schematic representation of pull-down workflows for biotin-streptavidin and Click&Go™ enrichment protocols.





Click-&Go Protein Capture Kits

All-inclusive kits for covalent capture of azido- or alkyne-tagged proteins on a alkyne- or azide-agarose resin supplied. The kit contains specially formulated components to both catalyze click reaction and prevent non-specific binding to the alkyne-modified resins.

Product #	Description	Pkg. Size	Price
1039	Click-&Go Protein Enrichment Kit *for capture of alkyne-modified proteins*	1 kit	\$325
1033	Click-&Go Protein Enrichment Kit *for capture of azide-modified proteins*	1 kit	\$325

Highlights

- Easy to use
- Affordable
- No special equipment required
- The kit includes all necessary reagents

Click Chemistry Capture Kit

Click Chemistry Capture Kit provides all necessary auxiliary reagents* for covalent capture of metabolically, azido- or alkyne-tagged proteins.

Product #	Description	Pkg. Size	Price
1065	Click Chemistry Capture Kit	1 kit	\$195

Highlights

- Can be used with alkyne- or azide-tagged biopolymers
- The kit includes all necessary reagents*

* enrichment media is not provided

Click Functionalized Agarose

Azide, Alkyne, or DBCO modified agarose used for covalent capturing alkyne-, or azide-tagged biopolymers.

Highlights

- Alkyne-reactive
- Affinity resin is adaptable to column and batch affinity chromatography techniques

Product #	Description	Pkg. Size	Price
1032	Alkyne agarose resin, 50% slurry	2 mL	\$129
1038	Azide agarose resin, 50% slurry	2 mL	\$129
1034	DBCO agarose resin, 50% slurry	2 mL	\$129

Click Functionalized Magnetic Beads

Azide, Alkyne, or DBCO modified, uniformed magnetic beads used for covalent capturing alkyne-, or azide-tagged biopolymers.

Highlights

- Uniform 1 micron beads
- Polymer encapsulated

Product #	Description	Pkg. Size	Price
1035	Alkyne Magnetic Beads, 10 mg/mL	1 mL	\$125
1036	Azide Magnetic Beads, 10 mg/mL	1 mL	\$125
1037	DBCO Magnetic Beads, 10 mg/mL	1 mL	\$125

Cleavable Protein Enrichment Kits

Overview

Cleavable Click & Go™ Protein Enrichment Kits is an efficient, biotin/streptavidin-free tool for capturing azide- or alkyne-tagged biomolecules on a cleavable agarose resin via click reaction and its subsequent selective release. Azide-, or alkyne-modified proteins, or their post-translationally modified forms, are captured from complex protein extracts on the cleavable agarose resin supplied. Once proteins covalently attached to the resin via copper catalyzed click chemistry, beads can be washed with highest stringency virtually eliminating any non-specifically bound proteins. Upon cleavage, it yields a highly enriched population of nascent proteins for downstream use.

Highlights

- Cleavable
- Chemoselective or reagent-free release
- Mild cleavage conditions yield intact proteins

Click&Go™ Protein Capture and Release Protocol

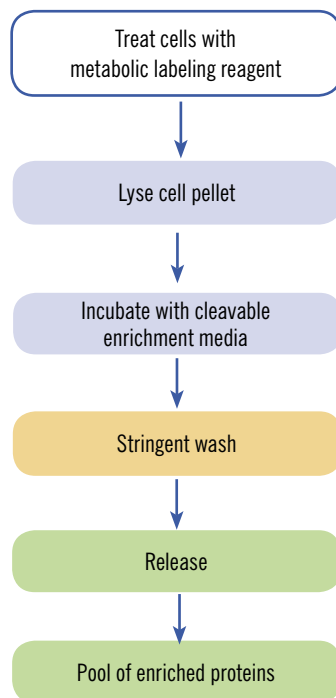


Figure 2.

Schematic representation of pull-down workflows for Click&Go™ catch and release protocols.

Click-&-Go™ PC Protein Enrichment Kits

for capture and photorelease of azide- or alkyne modified proteins

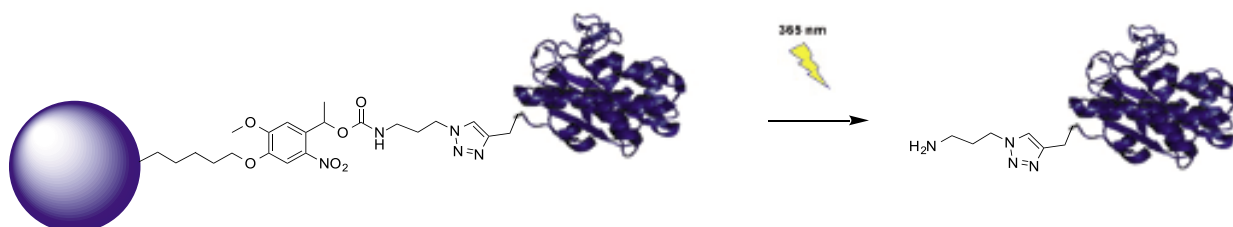


Figure 3. Schematic representation of photorelease.

Highlights

- Easy to use
- Selective and reagent-free release of captured proteins
- No special equipment required
- The kit includes all necessary reagents

Photolabile linker is stable towards various conditions (acidic, basic, including generally applied buffer systems) to which the biological sample may be exposed, and can also withstand the reactive (nucleophilic) species that are present in a cell extract. At the same time, captured biomolecules can be efficiently and selectively released under mild non-denaturing conditions.

The cleavage of photolabile probes is achieved with near-UV (365 nm) irradiation using an inexpensive, low intensity lamp that can be found virtually in every laboratory. Selective, reagent-free release conditions and high stability in various chemical conditions are great advantages of photolabile capture and release kits.

Click-&-Go™ PC Protein Enrichment Kits provide photocleavable agarose and all necessary auxiliary reagents for the covalent capture and release of azide- or alkyne-tagged proteins.

Product #	Description	Pkg. Size	Price
1151	Click-&-Go PC Protein Enrichment Kit *for capture and photorelease of alkyne-tagged proteins*	1 kit	\$375
1150	Click-&-Go PC Protein Enrichment Kit *for capture and photorelease of azide-tagged proteins*	1 kit	\$375

Click-&-Go™ Dde Protein Enrichment Kits

for capture and release of azide- or alkyne modified proteins

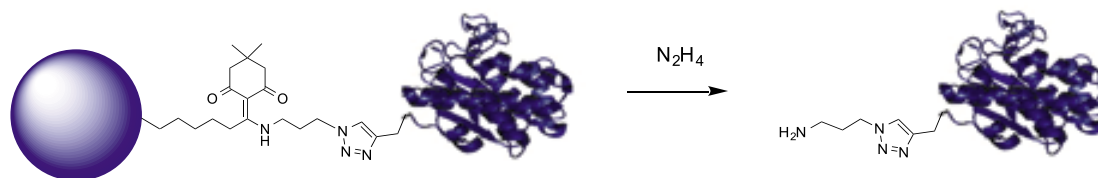


Figure 4. Schematic representation of hydrazine induced release.

Once azide- or alkyne-tagged proteins covalently attached to the resin via stable Dde linker, beads can be washed with highest stringency virtually eliminating any non-specifically bound proteins. Dde linker is stable towards acidic or basic conditions, generally applied buffer systems, and reactive species that are present in a cell extract.

The captured proteins can be chemoselectively released under mild aqueous buffered conditions with 2% hydrazine to yield highly enriched population of intact proteins.

Click-&-Go™ Dde Protein Enrichment Kits provide cleavable agarose and all necessary auxiliary reagents for the covalent capture and release of azide- or alkyne-tagged proteins.

Highlights

- Easy to use
- Chemoselective release
- Mild cleavage conditions

Product #	Description	Pkg. Size	Price
1153	Click-&-Go Dde Protein Enrichment Kit *for capture and release of alkyne-tagged proteins*	1 kit	\$375
1152	Click-&-Go Dde Protein Enrichment Kit *for capture and release of azide-tagged proteins*	1 kit	\$375

Ordering Information:

All orders are accepted by e-mail, fax, phone, or online.

We accept telephone technical inquiries between 8am and 6pm, PST, Monday through Friday.

Please include the following information to expedite your order:

Company name Billing and shipping addresses P.O # and Credit Card Information, Telephone number, Catalog number, product description, size, and quantity.



7850 E. Evans Road, Suite 107, Scottsdale, AZ 85260
Tel: 480-584-3340 | Fax: 866-717-2037
Email: inquiries@clickchemistrytools.com